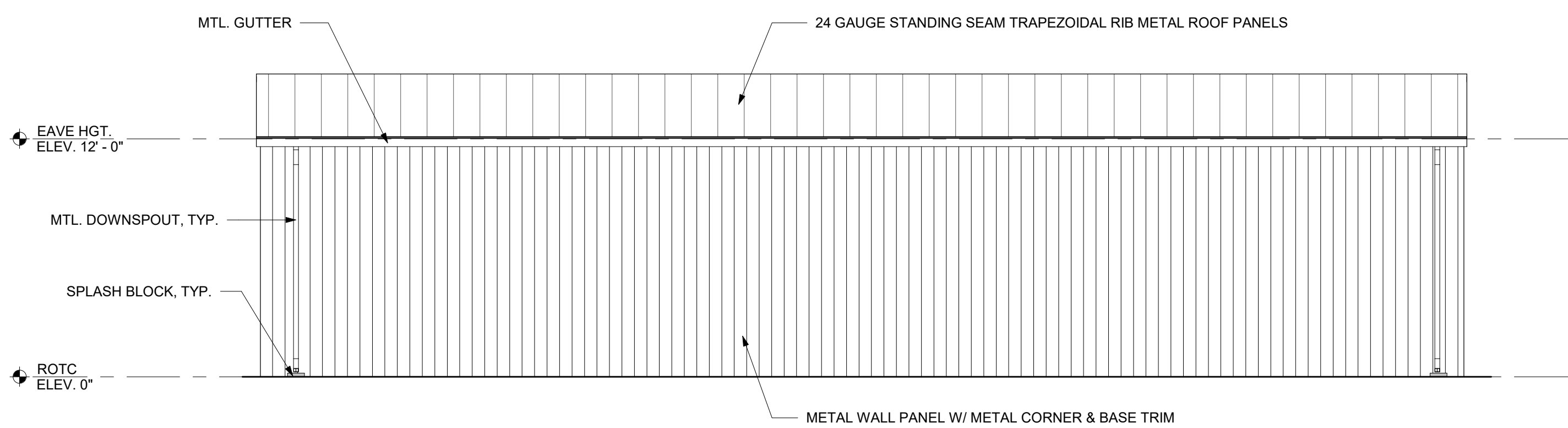
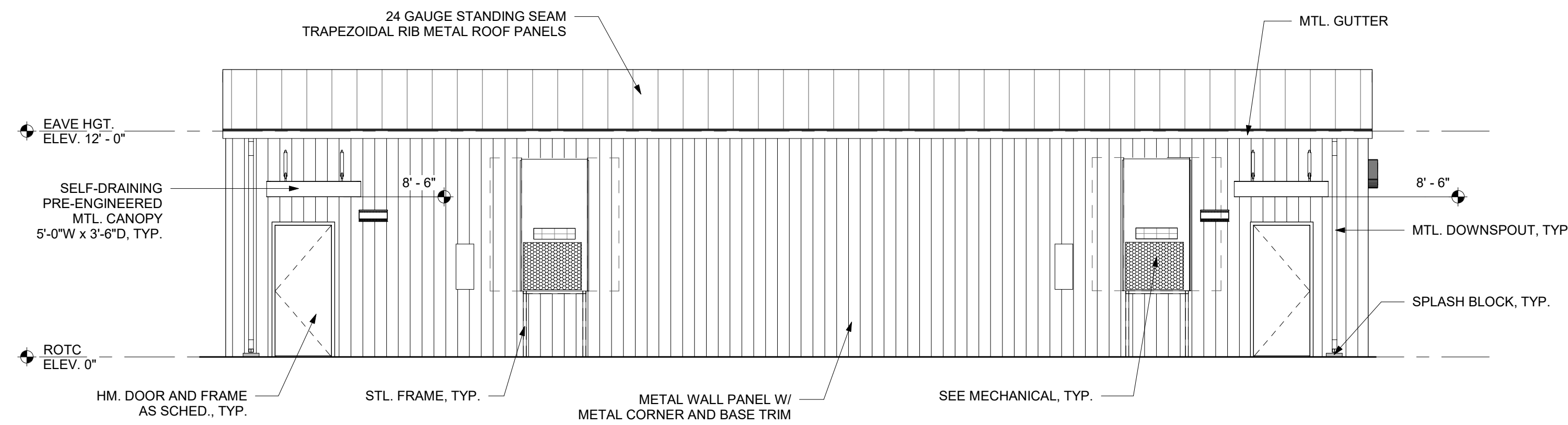


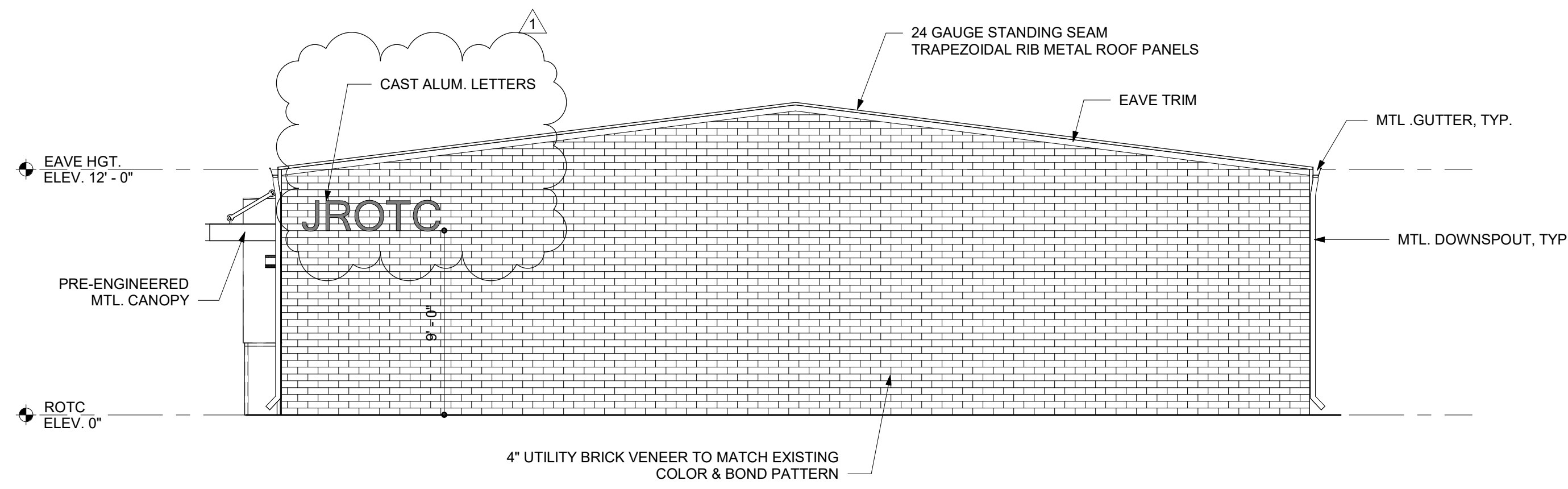
1 ROTC NORTH ELEVATION
SCALE: 3/16" = 1'-0"



2 ROTC EAST ELEVATION
SCALE: 3/16" = 1'-0"



3 ROTC WEST ELEVATION
SCALE: 3/16" = 1'-0"



4 ROTC SOUTH ELEVATION
SCALE: 3/16" = 1'-0"

Mark	Date	Description
1	05.04.20	ADDENDUM 1
	04.16.20	ISSUED FOR BIDDING
	03.20.20	100% REV. SUBMISSION
	10.14.19	NCDPI DD SUBMISSION
	07.30.19	SD PROGRESS DWGS
	07.11.19	NCDPI SD SUBMISSION

PROJECT NO:	2019083.01
DATE:	04.16.2020
SCALE:	3/16" = 1'-0"
DRAWN BY:	LJR PROJ MGR: RMC